

# LED TUBE PREMIUM



**Keep your existing fixtures and maintain the flexibility to replace light sources.**

**LED Tube PREMIUM is available as a replacement for all traditional fluorescent tubes, T5 or T8.**

- Premium LED Tubes – up to 220 lm/W
- Significant energy savings
- Experience with LED tubes since 2008
- Lifetime approx. 60,000–130,000 hours
- 5-year warranty, even for 24/7 operation
- RoHS compliant
- Hundreds of different models
- Customized to your requirements
- DALI / PUSH / 1–10V dimming with LED driver

---

[www.lightingstandard.eu](http://www.lightingstandard.eu)  
[info@lightingstandard.eu](mailto:info@lightingstandard.eu)  
Phone: +46 70 22 43 775

---



# LED TUBE PRODUCTS

## PREMIUM200



PREMIUM200



**T8 LED Tubes PREMIUM, for 230V direct connection or luminaires with magnetic ballast. 200 lumens/W**

ITEM NUMBER	DESCRIPTION
T8MS045-(30-60)F200	T8 LED 450mm. LED tube for 230V direct connection or use with conventional control gear. 8W, 200 lm/W. Replaces T8 14–15W.
T8MS06-(30-60)F200S-CERT	T8 LED 600mm. LED tube for 230V direct connection or use with conventional control gear. 10W, 200 lm/W. Replaces T8 18W.
T8MS12-(30-60)F200S-CERT	T8 LED 1200mm. LED tube for 230V direct connection or use with conventional control gear. 16W, 200 lm/W. Replaces T8 36W.
T8MS12-(31-61)F200S-CERT	T8 LED 1200mm. LED tube for 230V direct connection or use with conventional control gear. 18W, 200 lm/W. Replaces T8 36W.
T8MS12-(33-63)F200	T8 LED 1200mm. LED tube for 230V direct connection or use with conventional control gear. 24W, 200 lm/W. Replaces T8 36W where extra brightness is needed.
T8MS15-(30-60)F200S-CERT	T8 LED 1500mm. LED tube for 230V direct connection or use with conventional control gear. 24W, 200 lm/W. Replaces T8 58W.
T8MS15-(31-61)F200S-CERT	T8 LED 1500mm. LED tube for 230V direct connection or use with conventional control gear. 28W, 200 lm/W. Replaces T8 58W with increased brightness.
T8MS15-(32-62)F200	T8 LED 1500mm. LED tube for 230V direct connection or use with conventional control gear. 35W, 200 lm/W. Replaces T8 58W where extra brightness is required, e.g. at greater mounting heights.
T8MS15-(38-68)F200	T8 LED 1500mm. LED tube for 230V direct connection or use with conventional control gear. 40W, 200 lm/W. Replaces T8 58W where extra brightness is required, e.g. at greater mounting heights.



PREMIUM200

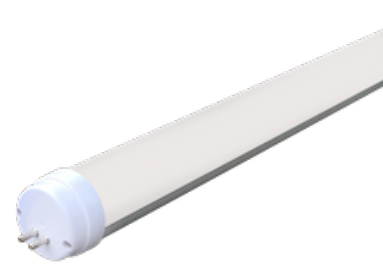


**T6 LED Tubes PREMIUM, for 230V direct connection. Replaces T5 fluorescent tubes. 200 lumens/W**

ITEM NUMBER	DESCRIPTION
T6MS06-(30-60)F200	T6 LED 549mm. LED tube for 230V direct connection. 8W, 200lm/W. Replaces T5 14W.
T6MS06-(31-61)F200	T6 LED 549mm. LED tube for 230V direct connection. 14W, 200lm/W. Replaces T5 24W.
T6MS09-(30-60)F200	T6 LED 849mm. LED tube for 230V direct connection. 12W, 200lm/W. Replaces T5 21W.
T6MS12-(30-60)F200	T6 LED 1149mm. LED tube for 230V direct connection. 18W, 200lm/W. Replaces T5 28W.
T6MS12-(31-61)F200	T6 LED 1149mm. LED tube for 230V direct connection. 24W, 200lm/W. Replaces T5 28-49W.
T6MS15-(33-63)F200	T6 LED 1449mm. LED tube for 230V direct connection. 18W, 200lm/W. Replaces T5 35W.
T6MS15-(31-61)F200	T6 LED 1449mm. LED tube for 230V direct connection. 28W, 200lm/W. Replaces T5 49W.



CE PREMIUM200



T8T5 LED Tubes PREMIUM, for 230V direct connection. Replaces T5 fluorescent tubes. 200 lumens/W

ITEM NUMBER	DESCRIPTION
T8T5MS12-(31-61)F200	<b>Note!</b> T8 LED tubes with T5 base. 1149 mm. For 230V direct connection, 18W, 200 lm/W. Replaces T5 28W. (For luminaires where T8 with T5 base fit).
T8T5MS12-(35-65)F200	<b>Note!</b> T8 LED tubes with T5 base. 1149 mm. For 230V direct connection, 24W, 200lm/W. Replaces T5 28-49W. (For luminaires where T8 with T5 base fit).
T8T5MS15-(31-61)F200	<b>Note!</b> T8 LED tubes with T5 base. 1449 mm. For 230V direct connection, 28W, 200lm/W. Replaces T5 49W. (For luminaires where T8 with T5 base fit).
T8T5MS15-(38-68)F200	<b>Note!</b> T8 LED tubes with T5 base. 1449 mm. For 230V direct connection, 35W, 200lm/W. Replaces T5 49-80W. (For luminaires where T8 with T5 base fit).
T8T5MS15-(39-69)F200	<b>Note!</b> T8 LED tubes with T5 base. 1449 mm. For 230V direct connection, 40W, 200lm/W. Replaces T5 80W. (For luminaires where T8 with T5 base fit).



# Åkersberga TK

“We chose Grönt Ljus AB because they have the strongest LED tubes on the market.”— Erik Carlbom, Club Manager ÅTK  
(The court on the left has been upgraded to LED)

# LED TUBE PRODUCTS

## PREMIUM220



PREMIUM220



**T8 LED Tubes PREMIUM, for 230V direct connection or luminaires with magnetic ballast. 220 lumens/W**

ITEM NUMBER	DESCRIPTION
T8MS045-(30-60)F220	T8 LED 450mm. LED tube for 230V direct connection or use with conventional control gear. 8W, 220lm/W. Replaces T8 14–15W.
T8MS06-(30-60)F220S-CERT	T8 LED 600mm. LED tube for 230V direct connection or use with conventional control gear. 10W, 220lm/W. Replaces T8 18W.
T8MS12-(30-60)F220S-CERT	T8 LED 1200mm. LED tube for 230V direct connection or use with conventional control gear. 16W, 220lm/W. Replaces T8 36W.
T8MS12-(31-61)F220S-CERT	T8 LED 1200mm. LED tube for 230V direct connection or use with conventional control gear. 18W, 220lm/W. Replaces T8 36W.
T8MS12-(33-63)F220	T8 LED 1200mm. LED tube for 230V direct connection or use with conventional control gear. 24W, 220lm/W. Replaces T8 36W where extra brightness is needed.
T8MS15-(30-60)F220S-CERT	T8 LED 1500mm. LED tube for 230V direct connection or use with conventional control gear. 24W, 220lm/W. Replaces T8 58W.
T8MS15-(31-61)F220S-CERT	T8 LED 1500mm. LED tube for 230V direct connection or use with conventional control gear. 28W, 220lm/W. Replaces T8 58W with increased brightness.
T8MS15-(32-62)F220	T8 LED 1500mm. LED tube for 230V direct connection or use with conventional control gear. 35W, 220lm/W. Replaces T8 58W where extra brightness is required, e.g. at greater mounting heights.
T8MS15-(38-68)F220	T8 LED 1500mm. LED tube for 230V direct connection or use with conventional control gear. 40W, 220lm/W. Replaces T8 58W where extra brightness is required, e.g. at greater mounting heights.



PREMIUM220

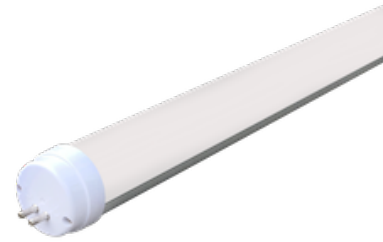


**T6 LED Tubes PREMIUM, for 230V direct connection. Replaces T5 fluorescent tubes. 220 lumens/W**

ITEM NUMBER	DESCRIPTION
T6MS06-(30-60)F220	T6 LED 549mm. LED tube for 230V direct connection. 8W, 220lm/W. Replaces T5 14W.
T6MS06-(31-61)F220	T6 LED 549mm. LED tube for 230V direct connection. 14W, 220lm/W. Replaces T5 24W.
T6MS09-(30-60)F220	T6 LED 849mm. LED tube for 230V direct connection. 12W, 220lm/W. Replaces T5 21W.
T6MS12-(30-60)F220	T6 LED 1149mm. LED tube for 230V direct connection. 18W, 220lm/W. Replaces T5 28W.
T6MS12-(31-61)F220	T6 LED 1149mm. LED tube for 230V direct connection. 24W, 220lm/W. Replaces T5 28-49W.
T6MS15-(33-63)F220	T6 LED 1449mm. LED tube for 230V direct connection. 18W, 220lm/W. Replaces T5 35W.
T6MS15-(31-61)F220	T6 LED 1449mm. LED tube for 230V direct connection. 28W, 220lm/W. Replaces T5 49W.



CE PREMIUM220



**T8T5 LED Tubes PREMIUM, for 230V direct connection. Replaces T5 fluorescent tubes. 220 lumens/W**

ITEM NUMBER	DESCRIPTION
T8T5MS12-(31-61)F220	<b>Note!</b> T8 LED tubes with T5 base. 1149 mm. For 230V direct connection, 18W, 220lm/W. Replaces T5 28W. (For luminaires where T8 with T5 base fit).
T8T5MS12-(35-65)F220	<b>Note!</b> T8 LED tubes with T5 base. 1149 mm. For 230V direct connection, 24W, 220lm/W. Replaces T5 28-49W. (For luminaires where T8 with T5 base fit).
T8T5MS15-(31-61)F220	<b>Note!</b> T8 LED tubes with T5 base. 1449 mm. For 230V direct connection, 28W, 220lm/W. Replaces T5 49W. (For luminaires where T8 with T5 base fit).
T8T5MS15-(38-68)F220	<b>Note!</b> T8 LED tubes with T5 base. 1449 mm. For 230V direct connection, 35W, 220lm/W. Replaces T5 49-80W. (For luminaires where T8 with T5 base fit).
T8T5MS15-(39-69)F220	<b>Note!</b> T8 LED tubes with T5 base. 1449 mm. For 230V direct connection, 40W, 220lm/W. Replaces T5 80W. (For luminaires where T8 with T5 base fit).



## Mastec Plastema AB

“We chose Grönt Ljus AB because they offered the most powerful T8 LED tubes at 35W. We were able to keep our existing fixtures, and the difference in lighting was incredible!”

Leif Albertsson  
Production / Logistic Manager  
MASTEC PLASTEMA AB

**MASTEC**

# LED TUBE PRODUCTS

## PREMIUMDIM



**Dimmable T8 LED Tubes PREMIUM, for use with LED driver. (See page 7). 200lm/W**

ITEM NUMBER	DESCRIPTION
T8DA06-(30-60)F200S-CERT	T8 LED 600mm. Dimmable LED tubes for external LED drivers, 10W, 200lm/W. Replaces T8 18W.
T8DA12-(30-60)F200S-CERT	T8 LED 1200mm. Dimmable LED tubes for external LED drivers, 16W, 200lm/W. Replaces T8 36W.
T8DA12-(33-63)F200S-CERT	T8 LED 1200mm. Dimmable LED tubes for external LED drivers, 24W, 200lm/W. Replaces T8 36W, where extra brightness is needed.
T8DA15-(30-60)F200S-CERT	T8 LED 1500mm. Dimmable LED tubes for external LED drivers, 24W, 200lm/W. Replaces T8 58W.
T8DA15-(31-61)F200S-CERT	T8 LED 1500mm. Dimmable LED tubes for external LED drivers, 28W, 200lm/W. Replaces T8 58W with increased brightness.
T8DA15-(32-62)F200S-CERT	T8 LED 1500mm. Dimmable LED tubes for external LED drivers, 35W, 200lm/W. Replaces T8 58W, where extra brightness is required, e.g. at greater mounting heights.
T8DA15-(38-68)F200S-CERT	T8 LED 1500mm. Dimmable LED tubes for external LED drivers, 40W, 200lm/W. Replaces T8 58W, where extra brightness is required, e.g. at greater mounting heights.



**DIMBARA T6 och T8T5 LED Tubes PREMIUM, for use with LED driver. (See page 7). 200lm/W**



ITEM NUMBER	DESCRIPTION
T6DA06-(30-60)F200	T6 LED 549mm. Dimmable LED tubes for external LED drivers, 12W, 200lm/W. Replaces T5 14W.
T6DA09-(30-60)F200	T6 LED 849mm. Dimmable LED tubes for external LED drivers, 15W, 200lm/W. Replaces T5 21W.
T6DA12-(30-60)F200	T6 LED 1149mm. Dimmable LED tubes for external LED drivers, 18W, 200lm/W. Replaces T5 28W.
T6DA12-(31-61)F200	T6 LED 1149mm. Dimmable LED tubes for external LED drivers, 24W, 200lm/W. Replaces T5 28-49W.
T6DA15-(33-63)F200	T6 LED 1449mm. Dimmable LED tubes for external LED drivers, 18W, 200lm/W. Replaces T5 35W.
T6DA15-(31-61)F200	T6 LED 1449mm. Dimmable LED tubes for external LED drivers, 28W, 200lm/W. Replaces T5 49W.
T8T5DA12-(35-65)F200	<b>Note!</b> T8 LED tubes with T5 base. 1149 mm. Dimmable LED tubes for external LED drivers, 24W, 200lm/W. Replaces T5 28-49W. (For luminaires where T8 with T5 base fit).
T8T5DA15-(31-61)F200	<b>Note!</b> T8 LED tubes with T5 base. 1449 mm. Dimmable LED tubes for external LED drivers, 28W, 200lm/W. Replaces T5 49W. (For luminaires where T8 with T5 base fit).
T8T5DA15-(38-68)F200	<b>Note!</b> T8 LED tubes with T5 base. 1449 mm. Dimmable LED tubes for external LED drivers, 35W, 200lm/W. Replaces T5 49-80W. (For luminaires where T8 with T5 base fit).
T8T5DA15-(39-69)F200	<b>Note!</b> T8 LED tubes with T5 base. 1449 mm. Dimmable LED tubes for external LED drivers, 40W, 200lm/W. Replaces T5 80W. (For luminaires where T8 with T5 base fit).

# DALI/PUSH/1-10V LED DRIVERS

## FOR DIMMABLE LED TUBES

**CE PREMIUMDIM**



**DALI/PUSH LED DRIVERS** for dimmable LED tubes.

ITEM NUMBER	DESCRIPTION
DAL030AD-BOKE	DAL030AD-BOKE, Dali LED driver 30W
DAL050AD-BOKE	DAL050AD-BOKE, Dali LED driver 50W
DAL060AD-BOKE	DAL060AD-BOKE, Dali LED driver 60W
DAL080AD-BOKE	DAL080AD-BOKE, Dali LED driver 80W

**CE PREMIUMDIM**



**1-10V LED DRIVERS** for dimmable LED tubes.

ITEM NUMBER	DESCRIPTION
1-10KHL030	BK-KHL030, 1-10V LED driver 30W
1-10KHL040	BK-KHL040, 1-10V LED driver 40W
1-10KHL050	BK-KHL050, 1-10V LED driver 50W
1-10KHL060	BK-KHL060, 1-10V LED driver 60W
1-10KHL080	BK-KHL080, 1-10V LED driver 80W